

Siemens LOGO! USB PC-cable driver installation guide

The Siemens LOGO! USB PC-cable can run under the following operating systems:

- **Windows XP/2000/Vista**
- **Linux 2.6**
- **Mac OS 9 / OS X**

This guide will tell you how to install this software for:

- **Windows XP/2000/Vista**
- **Linux 2.6**
- **Mac OS 9 / OS X**

Installing the driver on Windows

This guide is based on Windows XP but applicable for other Windows versions also. To successfully install the driver on your computer, follow these steps:

Step 1: Open the folder “Windows\CP210x_VCP_Win2K_XP_S2K3_Vista.exe”. Run the *.exe file and then click on the **Next** button.

Step 2: Select “**I accept the terms of the license agreement**”, click **Next**.

Step 3: Select “**Browse**” to relocate the driver installation file or click **Next** to continue.

Step 4: Click **Install**.

Step 5: Check “**Launch the CP210x VCP Driver Installer**” and click **Finish** to exit the wizard.

Step 6: Select “**change install location**” to relocate the driver installation file or click **Install** to keep the default location.

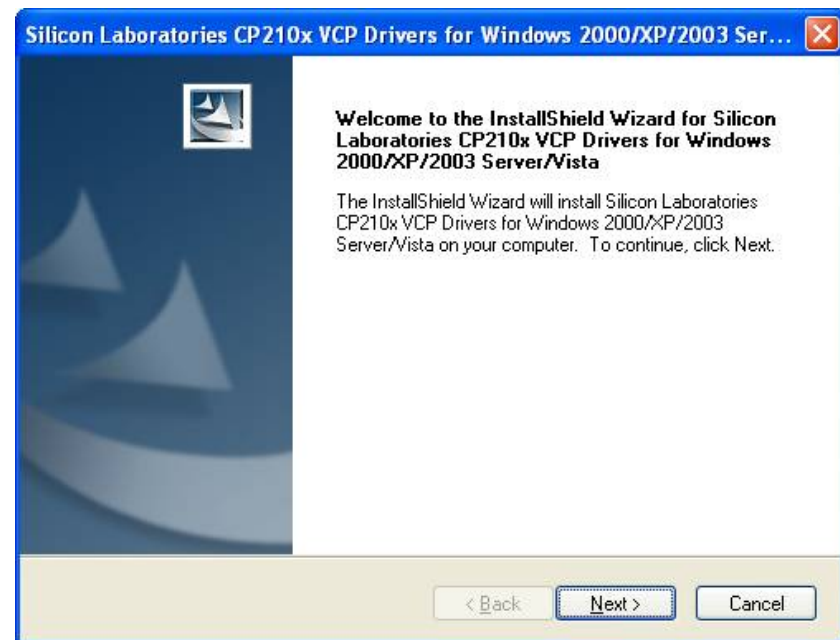
Step 7: When a pop-up window prompts “**installation completed successfully**” click **OK**. Maybe you need to reboot your computer to finish the installation.

Note: Your PC requires administrator rights to install the driver.

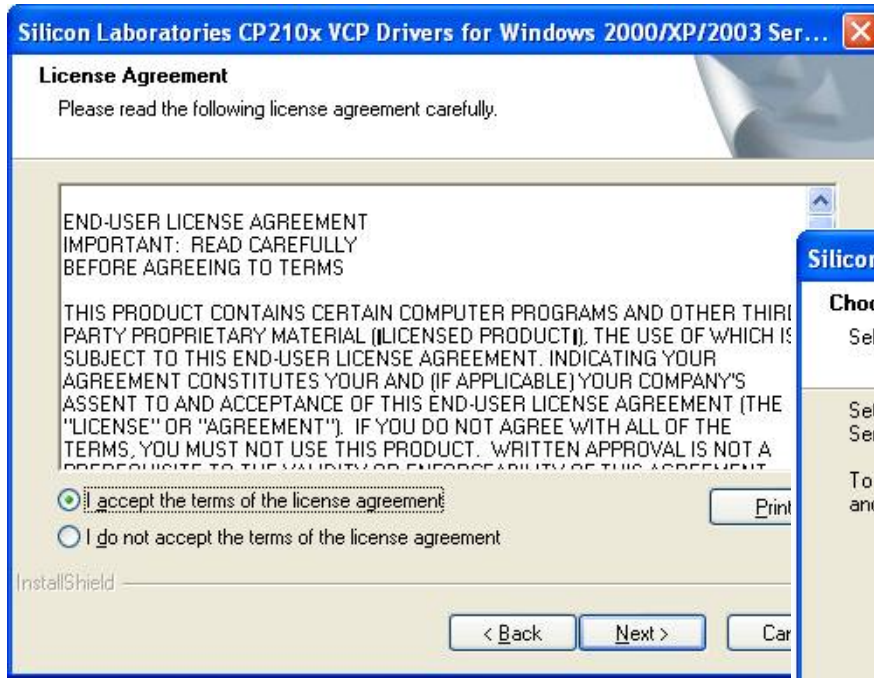
Installing the driver on Windows



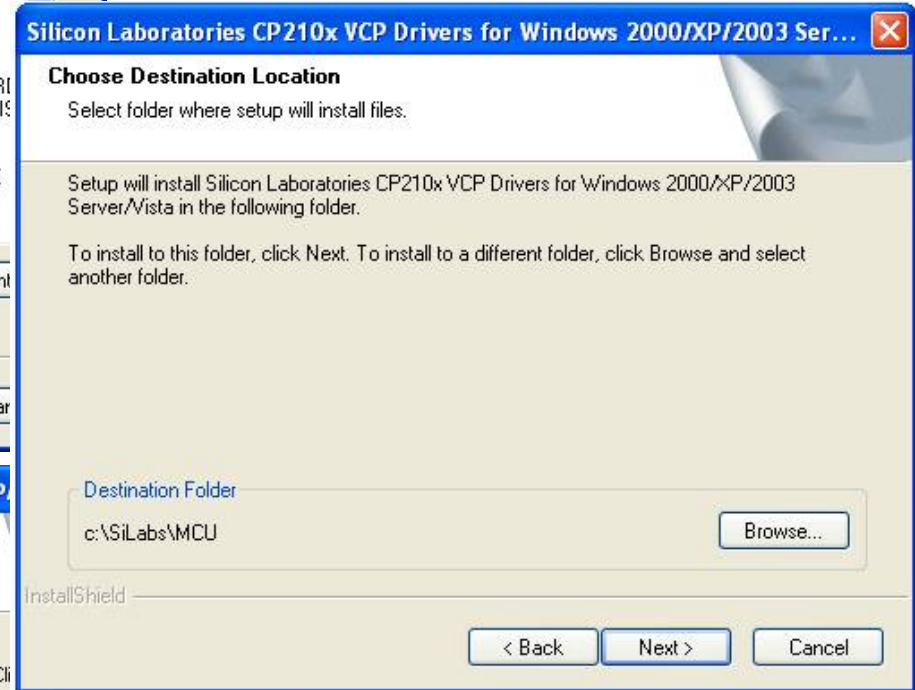
(1)



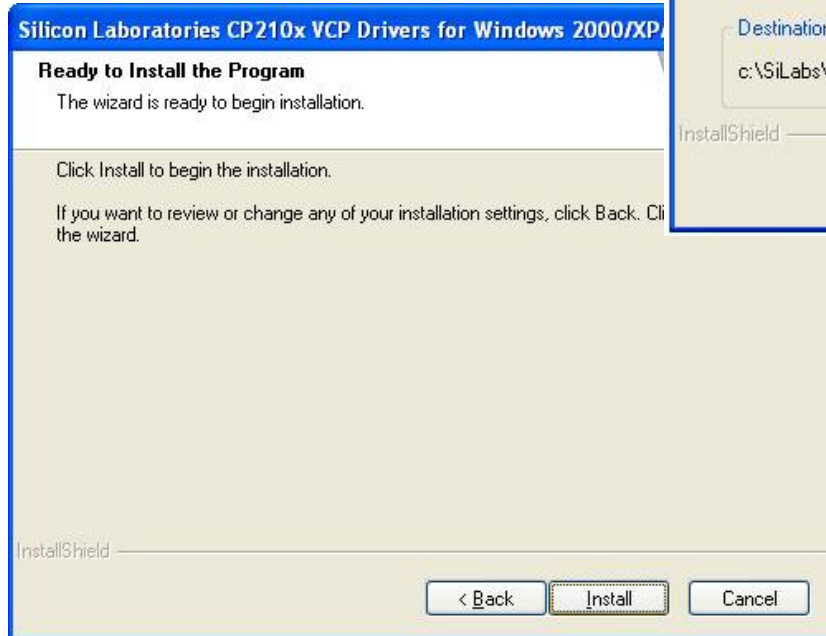
(2)



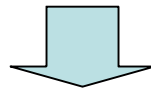
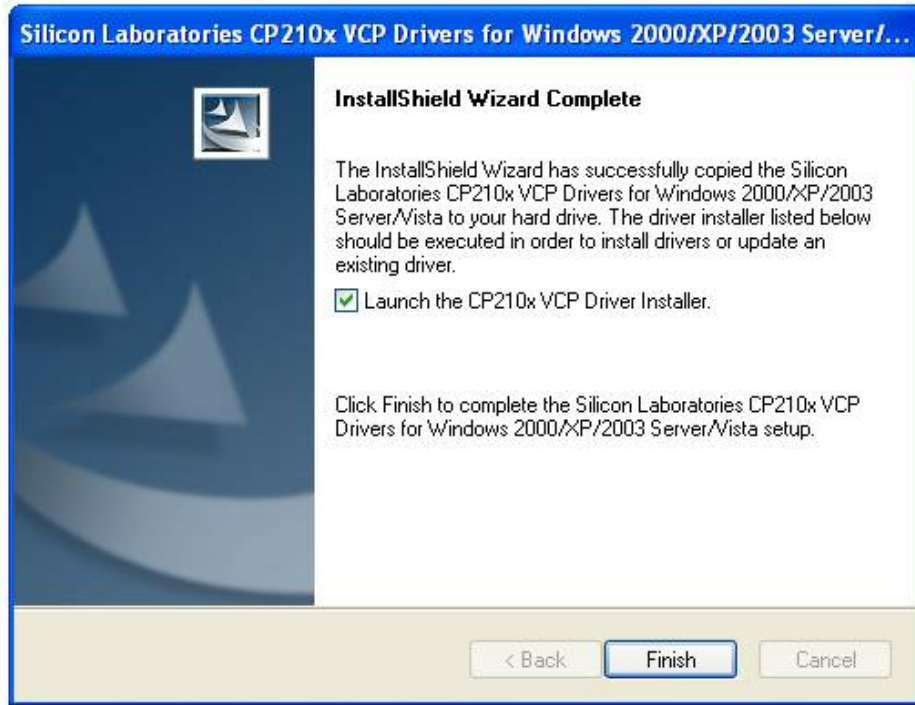
(3)



(4)



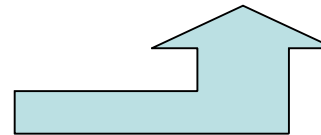
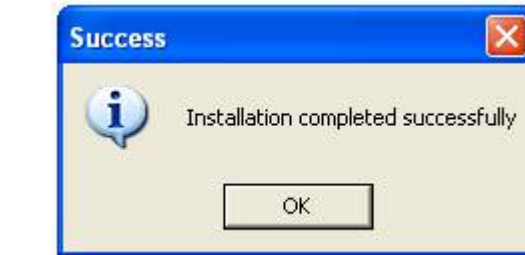
(5)



(6)



(7)



Initiation of the LOGO! USB PC-cable

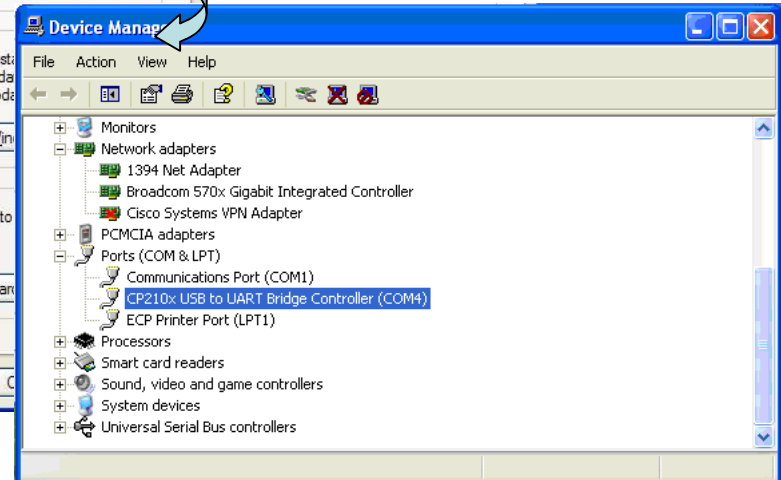
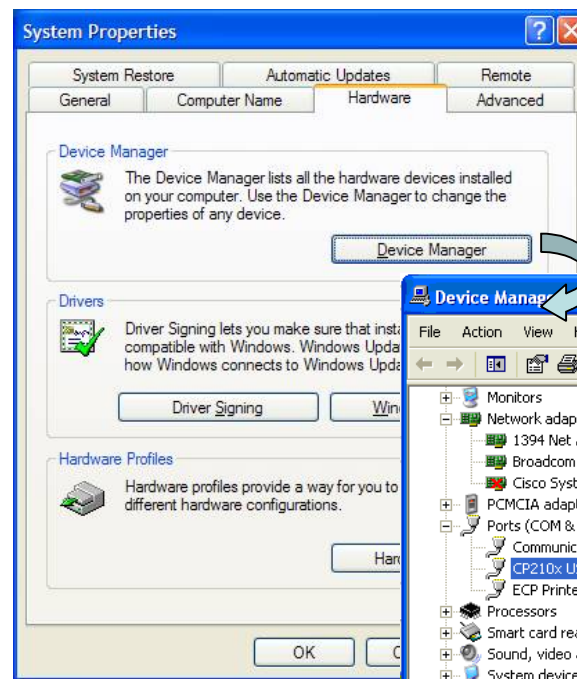
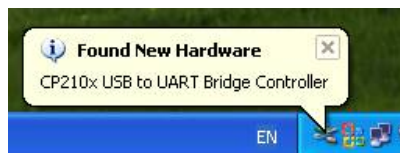
Plug the LOGO! USB PC cable into a USB port on your computer, three small windows will appear on the lower right area of the screen in succession (only for first plugging).

Note:

➤ DO NOT unplug the LOGO! USB PC cable out when it is transferring data.

➤ To view the **Device Manager** to find whether the COM port was assigned successfully.

Go to **Control Panel**, then open the **System Properties** window. Click on **Device Manager**. Expand the **Ports (COM & LPT)** tree by clicking on the “+” icon beside the title and find the entry “**CP210x USB to UART Bridge controller**”, which will tell you what COM port has been assigned.



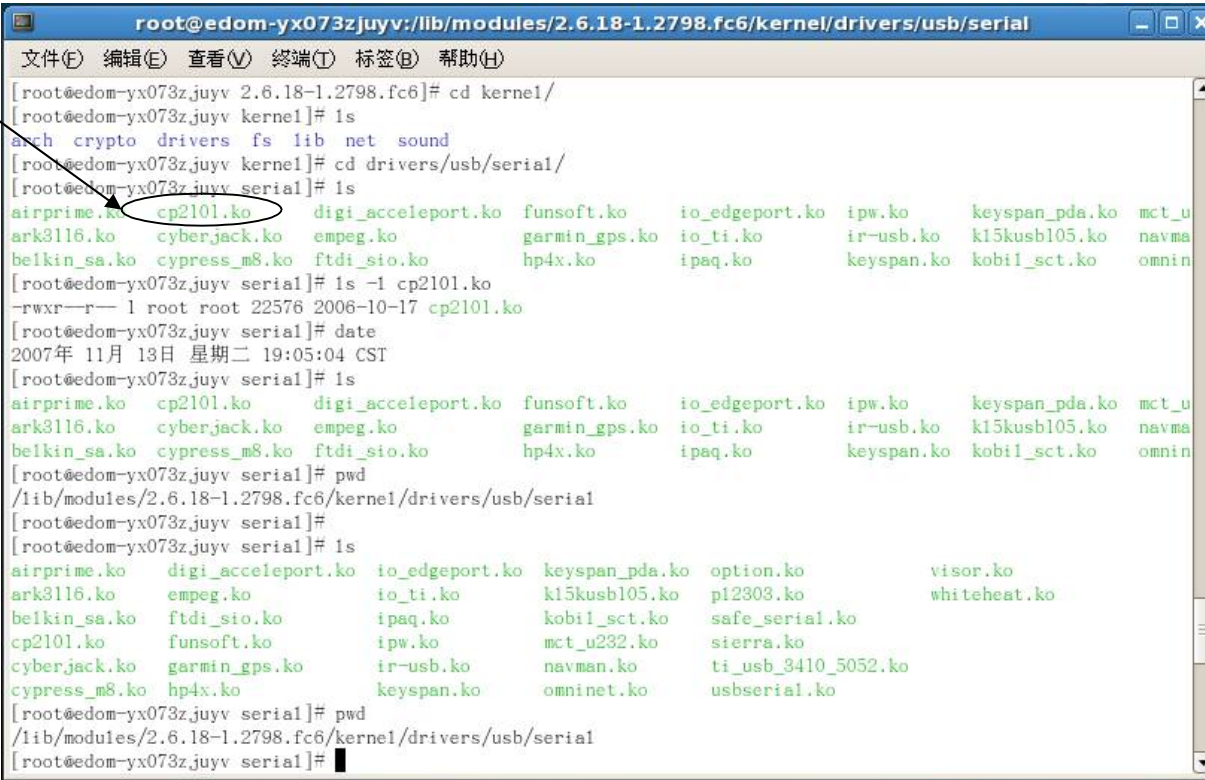
Installing the driver on Linux

Linux 2.6: Please check the version of your operating system. If the version of your operating system is lower than SUSE 10.0 or Fedora 2.6.15, please update your system.

Please check whether your operating system batched the driver. Refer the following picture. If so, the installation has been finished. Otherwise, please proceed the following steps:

- (1) Unzip the file “**Linux_VCP_v26_driver_src**”, under the “**Linux**” directory on the driver CD-Rom.
- (2) Please proceed as the instruction document: ‘SIL00205_RNF_20060902’.

The driver already exists in the operation system.



```
root@edom-yx073zjuyv:/lib/modules/2.6.18-1.2798.fc6/kernel/drivers/usb/serial
文件(E) 编辑(E) 查看(V) 终端(T) 标签(B) 帮助(H)
[root@edom-yx073zjuyv 2.6.18-1.2798.fc6]# cd kernel/
[root@edom-yx073zjuyv kernel]# ls
arch crypto drivers fs lib net sound
[root@edom-yx073zjuyv kernel]# cd drivers/usb/serial/
[root@edom-yx073zjuyv serial]# ls
airprime.ko cp2101.ko digi_acceleport.ko funsoft.ko io_edgeport.ko ipw.ko keyspan_pda.ko mct_u
ark3116.ko cyberjack.ko empeg.ko garmin_gps.ko io_ti.ko ir-usb.ko k15kusb105.ko navma
belkin_sa.ko cypress_m8.ko ftdi_sio.ko hp4x.ko ipaq.ko keyspan.ko kobil_sct.ko omnin
[root@edom-yx073zjuyv serial]# ls -l cp2101.ko
-rwxr--r-- 1 root root 22576 2006-10-17 cp2101.ko
[root@edom-yx073zjuyv serial]# date
2007年 11月 13日 星期二 19:05:04 CST
[root@edom-yx073zjuyv serial]# ls
airprime.ko cp2101.ko digi_acceleport.ko funsoft.ko io_edgeport.ko ipw.ko keyspan_pda.ko mct_u
ark3116.ko cyberjack.ko empeg.ko garmin_gps.ko io_ti.ko ir-usb.ko k15kusb105.ko navma
belkin_sa.ko cypress_m8.ko ftdi_sio.ko hp4x.ko ipaq.ko keyspan.ko kobil_sct.ko omnin
[root@edom-yx073zjuyv serial]# pwd
/lib/modules/2.6.18-1.2798.fc6/kernel/drivers/usb/serial
[root@edom-yx073zjuyv serial]#
[root@edom-yx073zjuyv serial]# ls
airprime.ko digi_acceleport.ko io_edgeport.ko keyspan_pda.ko option.ko visor.ko
ark3116.ko empeg.ko io_ti.ko k15kusb105.ko pi2303.ko whiteheat.ko
belkin_sa.ko ftdi_sio.ko ipaq.ko kobil_sct.ko safe_serial.ko
cp2101.ko funsoft.ko ipw.ko mct_u232.ko sierra.ko
cyberjack.ko garmin_gps.ko ir-usb.ko navman.ko ti_usb_3410_5052.ko
cypress_m8.ko hp4x.ko keyspan.ko omninet.ko usbserial.ko
[root@edom-yx073zjuyv serial]# pwd
/lib/modules/2.6.18-1.2798.fc6/kernel/drivers/usb/serial
[root@edom-yx073zjuyv serial]#
```


Installing the driver on Macintosh

To install the Macintosh OS-X virtual COM port driver, extract the cardinal-osx-V1_06_2-release.DMG file. Next, run the extracted file SLAB_USBtoUART Installer.

To uninstall the driver, run the extracted file SLAB_USBtoUART Uninstaller.

Macintosh OS-9 virtual COM port drivers are currently available by request only.

To obtain a copy of these drivers, contact a Silicon Laboratories MCU Tools Support representative at www.silabs.com.